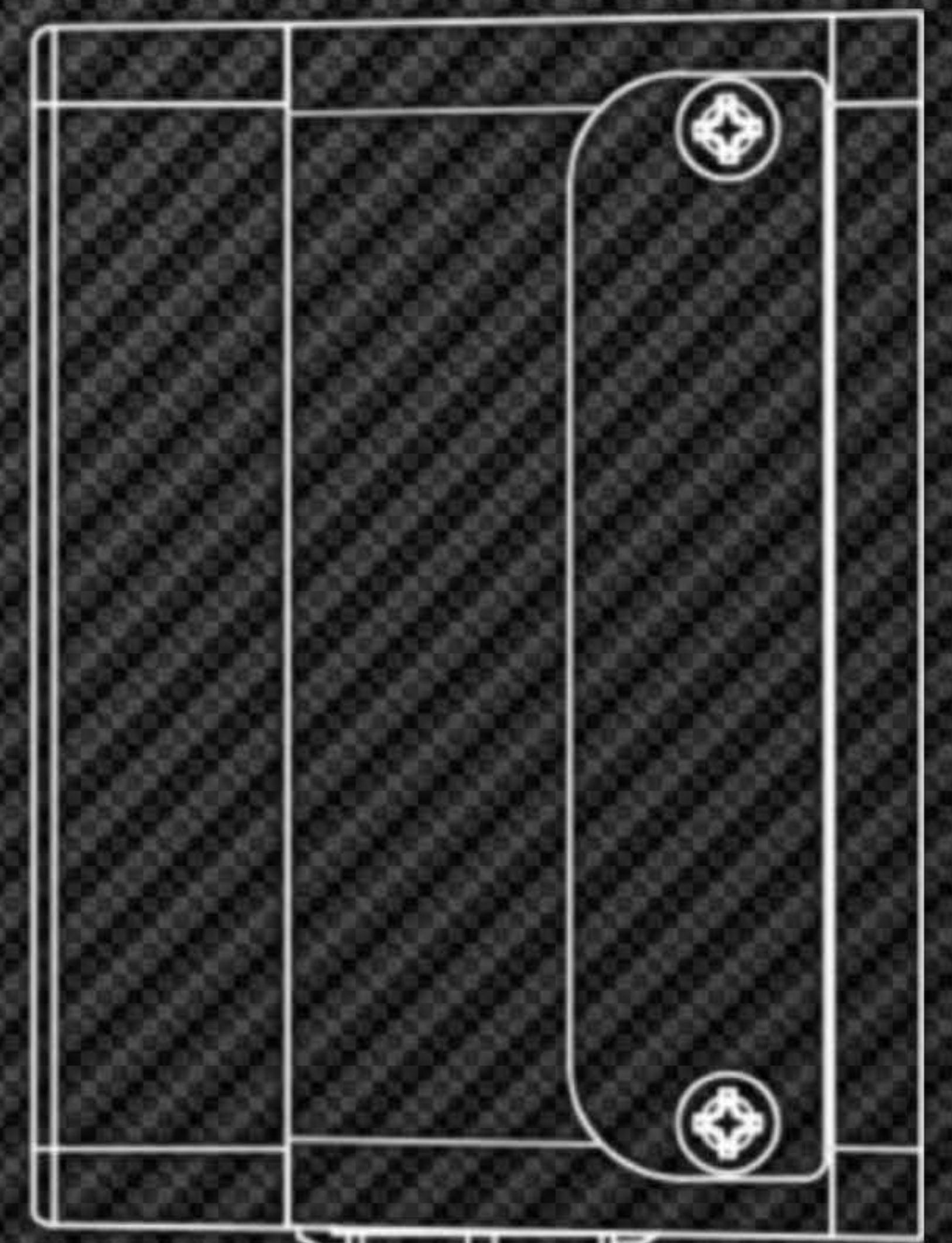


# Getting Started

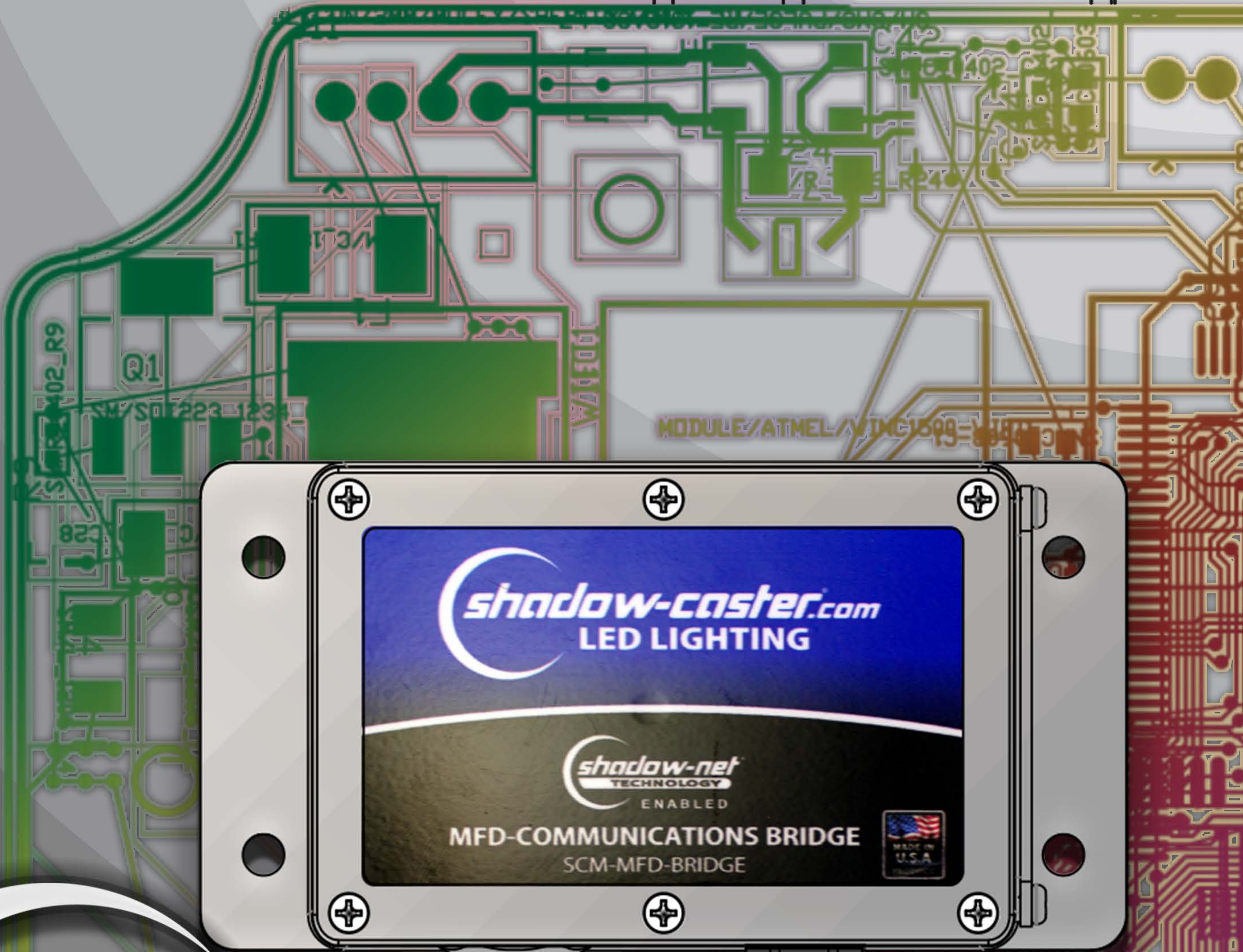
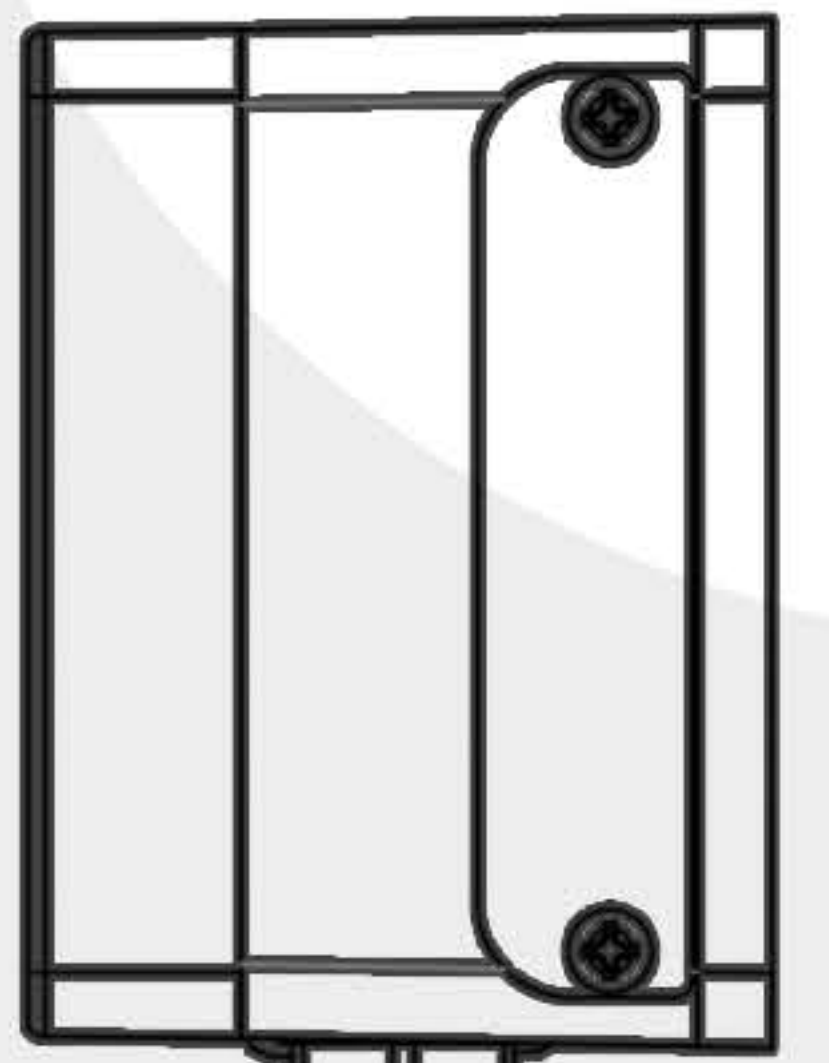


SCM-MFD-BRIDGE  
*COMMUNICATION BRIDGE*



# SCM-MFD-Bridge Communication Bridge

My Serial Number



**shadow-caster.com**  
**MARINE LEDS**

Table of Contents	
Useful Links	1
Wiring Diagram	2
Opening the box	3
The User Interface	4
Scenes	5
Zones	6
The Toolbar	7
The Program Panel	8

## Useful Links



**Find this Guide**

[Shadow-Caster.com/manuals](http://Shadow-Caster.com/manuals)



**Register Your Product**

[Shadow-Caster.com/warranty](http://Shadow-Caster.com/warranty)

**Video Tutorial**



[Shadow-Caster.com/videos](http://Shadow-Caster.com/videos)

**Get Help**

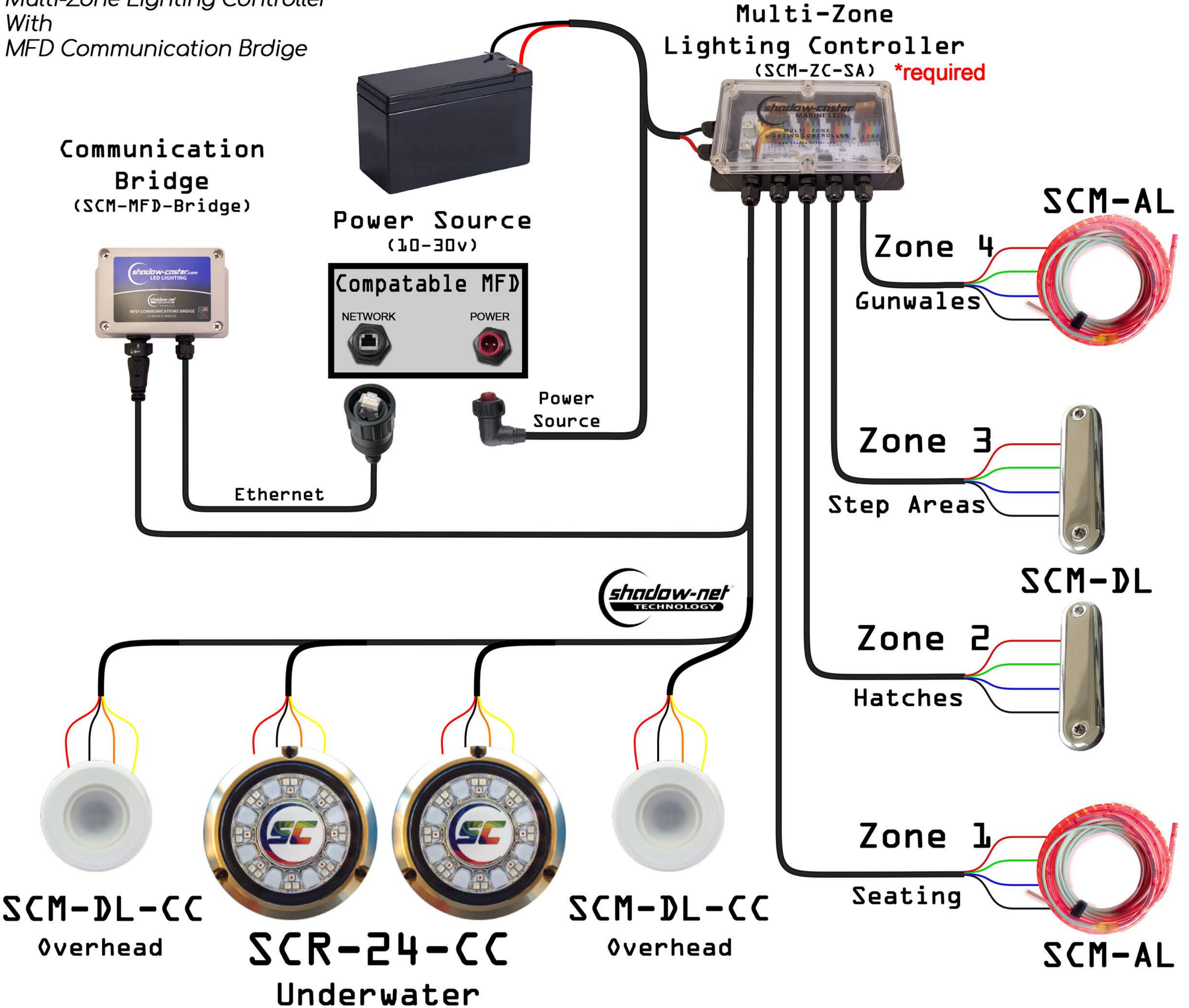


[Shadow-Caster.com/help](http://Shadow-Caster.com/help)

# Wiring Diagram

## Example of a typical installation

Multi-Zone Lighting Controller  
With  
MFD Communication Bridge



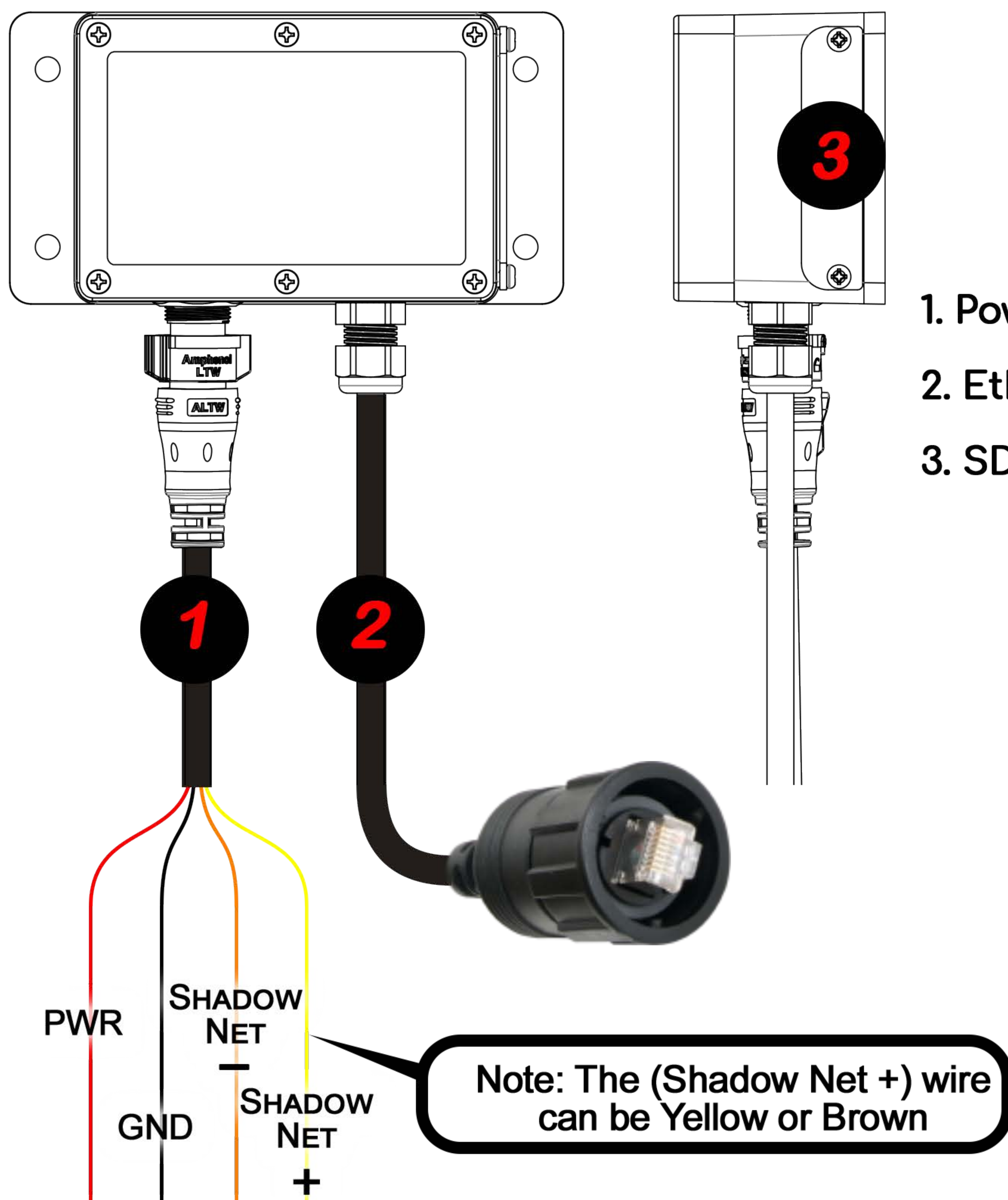
The Shadow-Caster MFD Bridge creates a bridge from an Ethernet connected Multifunction Display, Personal Computer or mobile device. It allows control of Shadow-Caster Multi Zone Controller (sold separately - Product sku SCM-ZC-SA). The Shadow-Caster MFD-Bridge is currently compatible with Garmin 8600 ONE-HELM compatible units and Simrad Axiom Series units.

With the MFD Bridge, you can have advanced control of your Shadow-Caster lighting at your fingertips. Individually control the intensity and color of each zone. When set in Program mode, choose from advanced animation effects like fade, strobe, color change, music sync, and many more!

# Getting to know your SCM-MFD Communication Bridge

## Box Contents

- ~ SCM-MFD-Bridge in IP67 Waterproof Enclosure
- ~ (x4) SS 316 Pan Head, #8 x1/2" Mounting Screws
- ~ Quick Start Guide
- ~ Warranty & Registration Information



For use with Navico/Simrad:  
(SCM-MFD-Bridge-Navico)

For use with Garmin:  
(SCM-MFD-Bridge-Garmin)

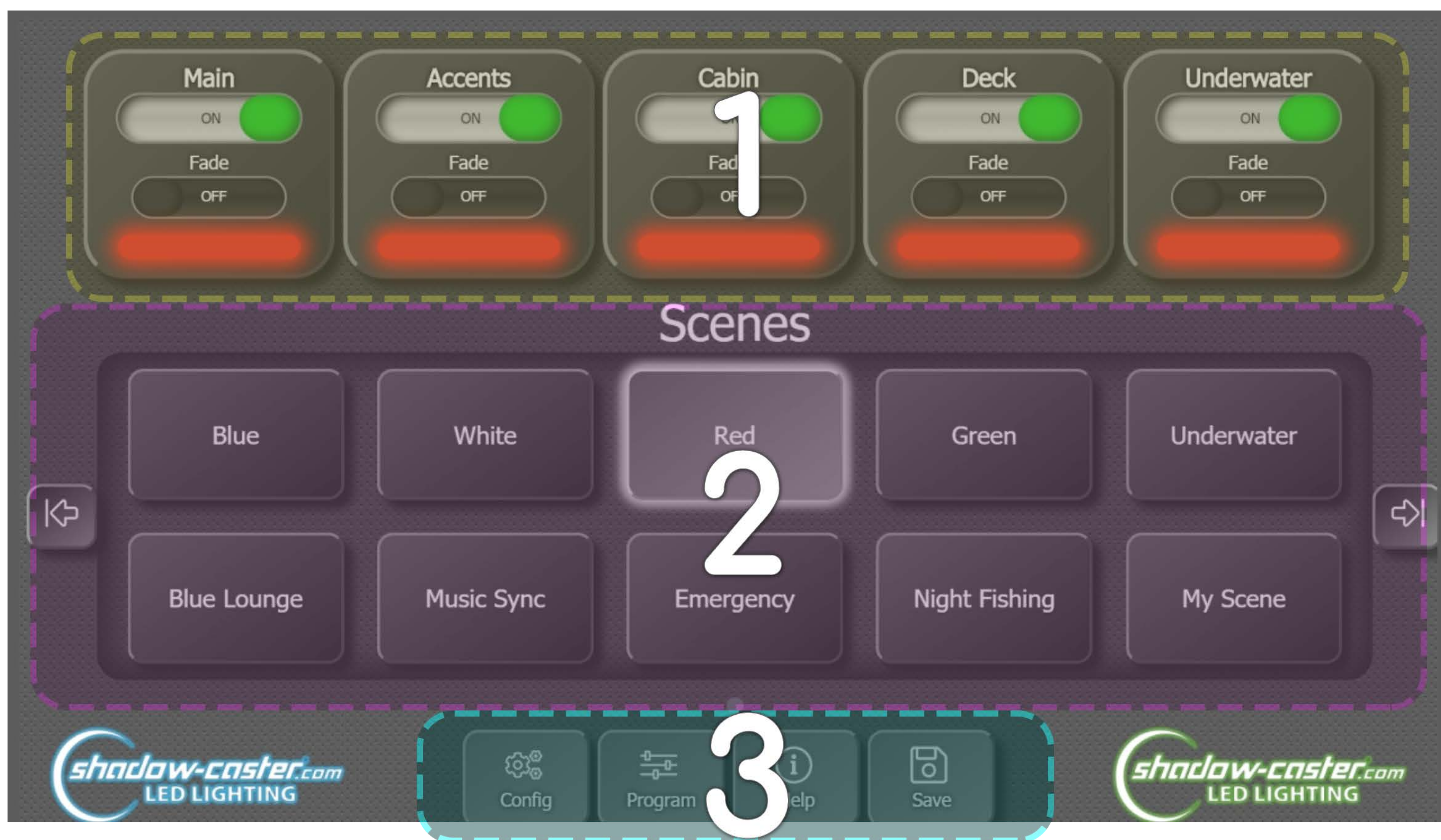
# The User Interface

Your MFD will automatically connect and display the lighting app on supported devices, but for devices that are currently unsupported, the User Interface can be accessed manually by visiting this link using your devices Internet browser (note: no Internet connection is required)

<http://catshark.local/index.html>

## Main Panel

Upon opening the Lighting App, you should see the Main Panel. There are three areas of this panel.



1. Zones
2. Scenes
3. Toolbar

# Scenes

A “Scene” is a way to have all of the zones in your configuration to change to a predetermined color, intensity, and mode. New scenes can be saved, and existing scenes can be customized and or removed to fit your preferences.



## To delete a scene

*touch and hold on the scene button for a few seconds*

## To update a scene

*adjust the zones to your desired settings. Click the save button, and specify the name of the scene you'd like to update. When asked to override, choose yes.*

## To save a scene

*Press the Save button on the toolbar and enter a unique name*

# Zones

A “Zone” can be one or more lighting devices. Each zone can be unique with its own color, intensity and mode.

Touch any zone button to open the zone controls. Using the zone controls, you can adjust the color and intensity of the selected zones.



Touch more zones to add to your selection. Any changes you make will apply instantly to all of the selected zones. You can see a preview of a zones color at the bottom of the zone button. There are two toggle switches:

## Power Switch

*turns a zone on and off*

## Program Switch

*enables/disables the active program*

The active program is displayed in the center of each zone button, between the two toggle switches.

## To Rename a Zone

*simply touch and hold on the zone button.*



# The Toolbar

The toolbar is how you navigate to different panels in the interface. There are currently 4 panels



## Config

The config panel contains settings such as restarting your device, and toggling the use animations setting for the interface. Warning, enabling animations may affect the performance of your device.

## Program

The program panel is where you can modify the active program settings. See [The Program Panel](#)

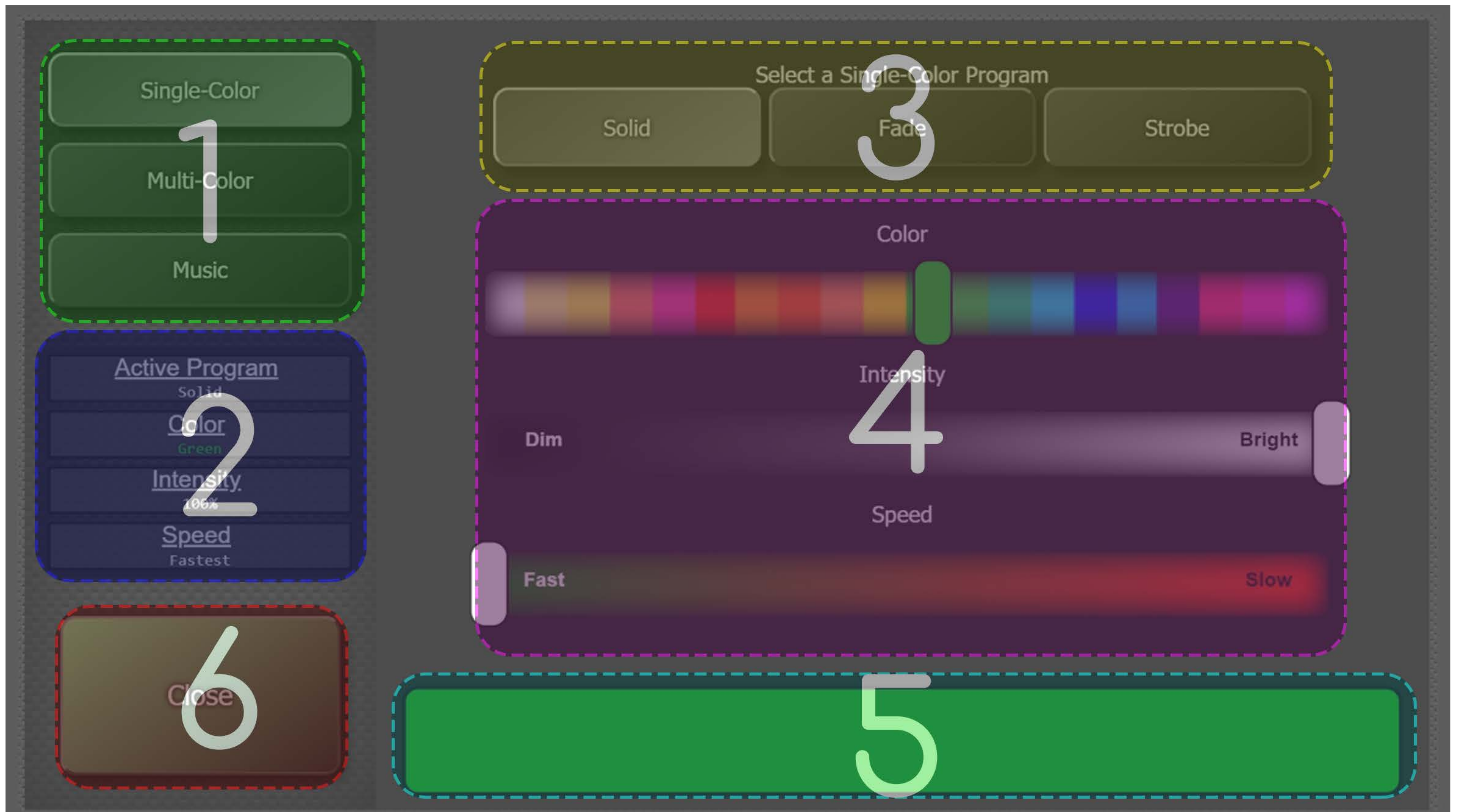
## Help

The help panel contains useful troubleshooting information, as well as ways to get in contact with Shadow-Caster support. Scan the QR code to get a jump start on your support inquiry.

## Save

Saves the current zone configuration settings as a Scene. You can specify a new name, or override an existing scene by specifying an existing name.

# The Program Panel



## 1. Program Types

*Categories of different types of programs that are available*

## 2. Active Program Information

*Readout the selected settings for the current active program*

## 3. Active Program

*These buttons are used to change which program is selected or 'active'*

## 4. Settings

*Adjustable settings for the active program*

## 4. Preview

*A preview of the program settings*

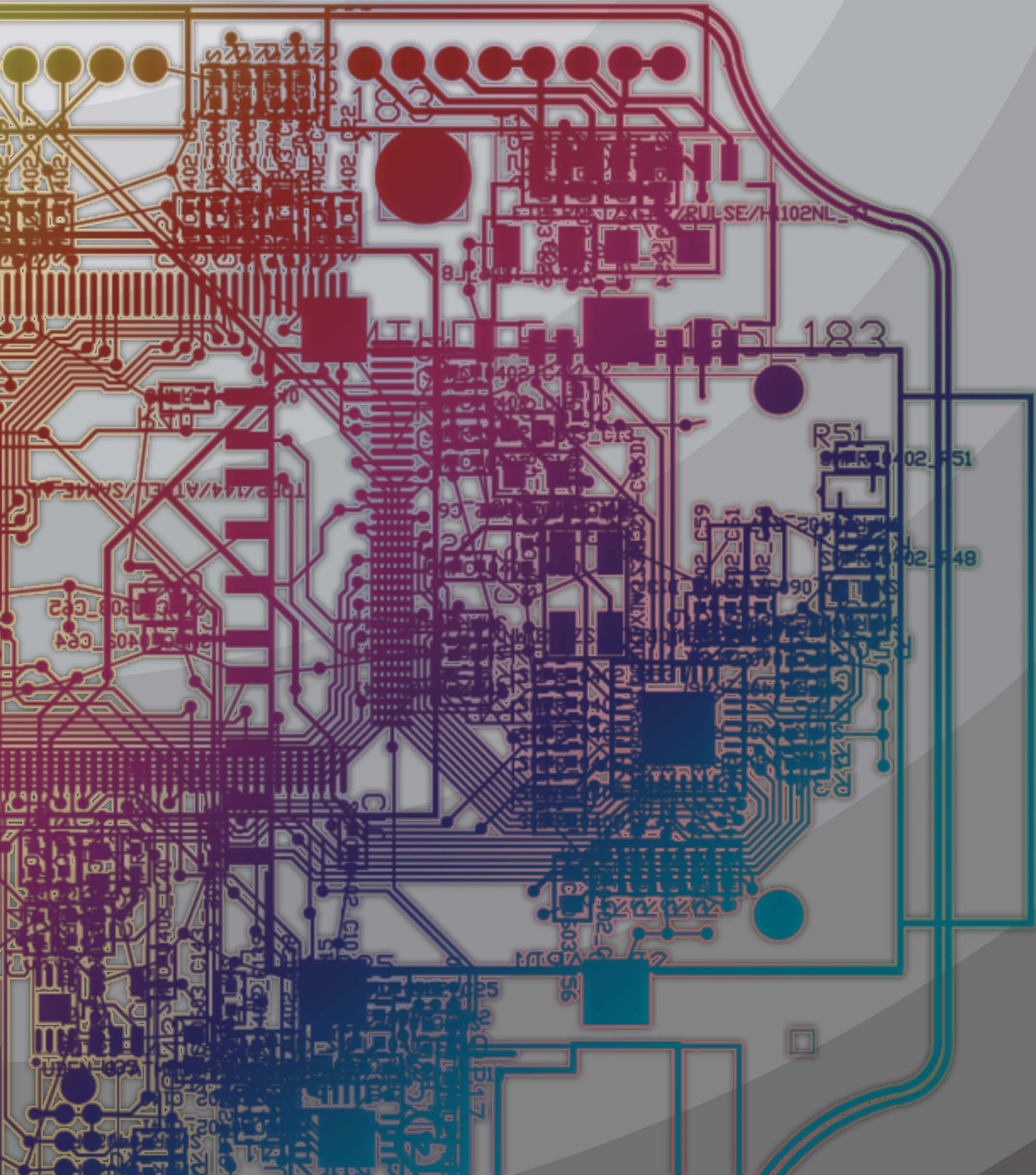
## 5. Close

*Hide the program panel*



***shadow-caster.com***<sup>®</sup>

**LED LIGHTING**





1237 Lady Marion Lane

Dunedin, FL 34698

727-474-2877

<http://shadow-caster.com/>

Shadow-Caster LLC © All Rights Reserved